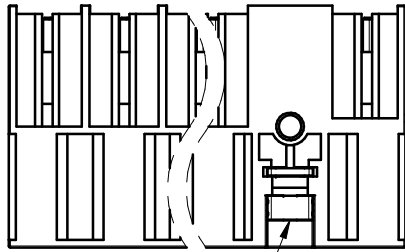
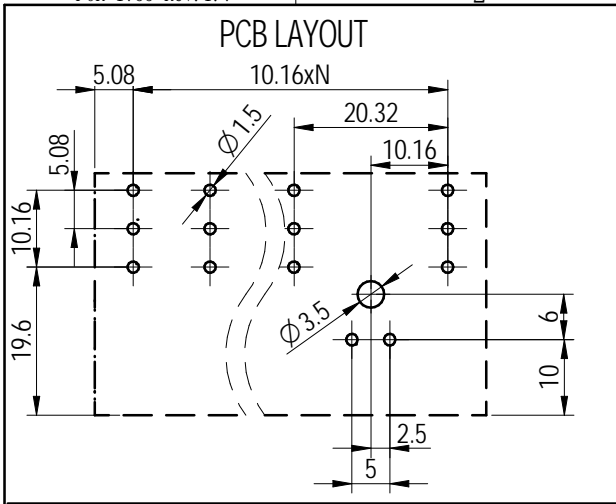
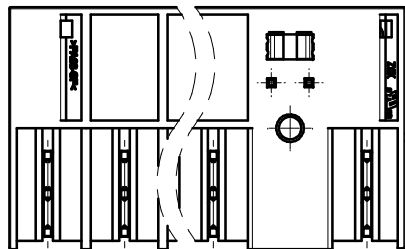
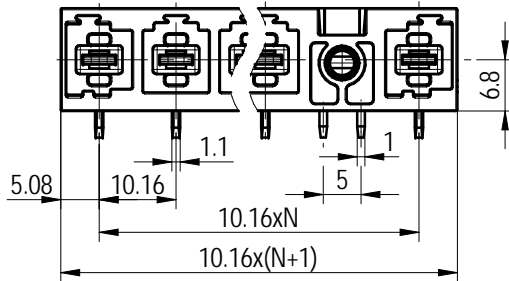
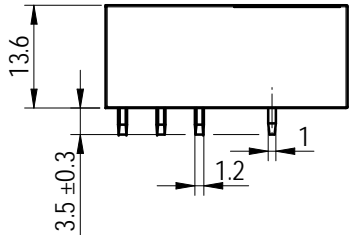


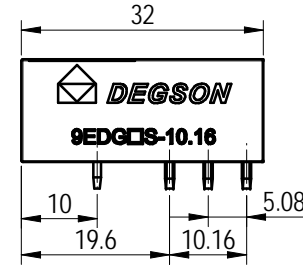
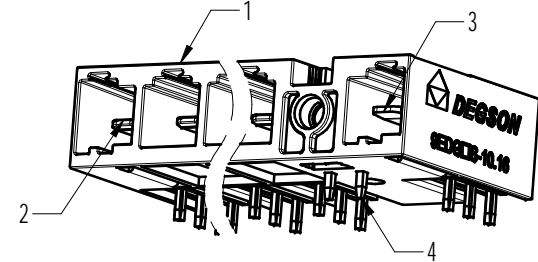
Transfer or duplication of this document as well as the utilization or communication of its contents are prohibited unless authorized in general. 未经授权复制或传播本文件及其内容，以及本文件中所载的任何信息，均属于侵权行为，公司将依法追究。 除专利等明确标注外，本文件中所有标注均受知识产权保护。 除专利等明确标注外，本文件中所有标注均受知识产权保护。



Lx: Refers to the fixed position in the X position from left to right



未注公差/General tolerances (mm)														0.1/10
0	>3	>6	>10	>18	>30	>50	>80	>120	>180	>250	>315	>400	>500	
±0.12	±0.18	±0.22	±0.26	±0.31	±0.37	±0.57	±0.80	±0.93	±1.05	±1.15	±1.60	±2.20	±2.50	±2'
~3	~6	~10	~18	~30	~50	~80	~120	~180	~250	~315	~400	~500		



ITEM	NAME OF PART	MATERIAL	NOTES
4	Soldering-contact	Copper Alloy	Sn_plated
3	Pin_header-PE	Copper	Ag_plated
2	Pin_header	Copper	Ag_plated
1	Housing	PA66-GF	UL94V-0

UL 标准/UL Standard:	B	C	D
额定电压/电流/Rated Voltage(V)/Current(A)	300/57	300/57	600/5
IEC 标准/IEC Standard:	III/3	III/2	II/2
过压类别/Overvoltage Category/污染等级/Pollution Degree	III/3	III/2	II/2
额定电压/电流/Rated Voltage(V)/Current(A)	690/78.3	1000/78.3	1000/78.3
额定脉冲电压(KV)/Rate Impulse Voltage(KV)	8	8	6
间距/Pitch(mm)/线数范围/Poles	10.16/N=02~04P		
使用温度范围/Operating temperature(°C)	-40~+130		
符合RoHS环保要求/Conform to RoHS	Yes		
标准颜色编号/Standard color number: PANTONE / RAL	black		



MATERIAL:	SURFACE/COLOR:
MAT NO./REV: - / 00	MAT STATUS: 样品

APPD: David	2023-05-11	NAME	9EDGRS-10.16-GR-Lx-XXP-1Y-00Z (H)				
CHKD: David	2023-05-11		DRAWING NO.	TYPE	DRAWING STATUS	SCALE	SHEET
DRFT: 曹心一	2023-05-11		200122862	CUSTOMER DRAWING	work	1:1	1/1

REV	ECN	DESCRIPTION	DRFT	DATE
00				