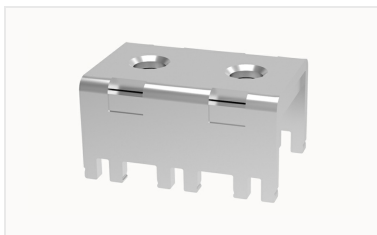


Overview

Product information



K59-00A(H)-109000000084

Metal Part,nominal current:269A,screw thread Specification:M6>Contact surface:Tin

Product advantages

- ☑ Screw connection, strong reliability
- ☑ Technology of integrated nut, excellent torque
- ☑ Suitable for in-unit installation

Product certification

Technical data

Product drawing

3D model

□

Processing notes

Process

Wave soldering/manual soldering

Connection capacity

Torque

3.5N.m

Item properties

Type of installation

PCB welding

Connection method

Screw connection

screw thread

M6

Number of potentials

1

Pluggable or not

no

Material data

Environmental items	Compliant with REACH/RoHS
Contact material	Copper alloy
Contact zone metal surface	tin-plated

Accessories

Business data	
Order number	10900000084
Packing unit	50
Minimum order quantity	
Products weight (without packaging)	38.02