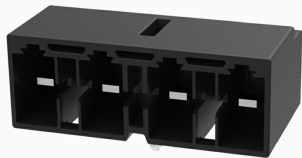


Overview

Product information



9EDGRB-HC-7.5-10030010222

Pluggable terminal blocks, Rated current: 25A. Rated voltage
(III/3) : 630V, pitch: 7.5mm, Color: black, Contact surface : Tin

Product advantages

- ☑ Supporting 9EDGKD-HC plug
- ☑ Insert and remove direction parallel to PCB
- ☑ Fixed foot structure, PCB installation is more firm

Product certification



Technical data

Product drawing

3D model

□

Packaging information

Type of packaging

box-packed

Electrical parameters UL

Rated voltage (B)

300V

Rated voltage (C)

150V

Rated current (B)

25A

Rated current (C)

25A

Electrical parameters IEC

Rated voltage

630V

Rated voltage(III/3)	630V
Rated current	25A
Rated surge voltage(III/3)	6KV

Item properties

Type of installation	PCB welding
Pin arrangement	Single row in a straight line
Connection method	Push-in spring connection
Pitch	7.5mm
Number of potentials	4

Material data

Environmental items	Compliant with REACH/RoHS
Contact material	Copper alloy
Contact zone metal surface	tin-plated
Insulation Materials	PA66
Relative tracking index CTI	600V
Glow Wire Flammability Index GWFI	850
Shell color	Black
Flammability rating	UL94V-0

Mechanical tests

Test Specification	IEC61984/ UL1059
--------------------	------------------

Environmental data

Ambient temperature (operation)	-40℃~105℃(depending on derating curve)
---------------------------------	--

Accessories

Tool

Screwdriver	/
Operating tool	/

Accessories

Coding strip	2EDG-PWP-01A(H)
Bridge	/
Marking strip	/
Others	/

Business data

Order number	10030010222
Packing unit	540
Minimum order quantity	
Products weight (without packaging)	4.7