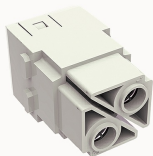


## Overview

### Product information



## D2MK-002-F(16-35mm<sup>2</sup>)-21020000256

Heavy-duty insert, Number of contacts: 2, Dimension: 2 module Spaces, Rated voltage : 1000V, Rated current: 100A, Female insert, axial Screw connector

### Product advantages

- ☑ Axial Screw connection technology, applicable to a wide range of wire specifications;
- ☑ Less materials, easy to manage;
- ☑ Modular products, easy to assemble and maintain .

### Product certification



## Technical data

### Product drawing

### 3D model

□

### Marking

classification	Insert
Series	DM

### versions

Connection method	Axial screw connection
Female/Male	Female
Dimension	2 module
Number of positions	2
PE Contacts	No

### Material characteristics

Material (insert)	Polycarbonate (PC)
Materia (Contact)	Copper alloy
Surface (Contact)	Silver plated
Flammability rating	V-0
color	Grey/White (RAL 7032)
RoHS	Comply with RoHS exemptions

Electrical parameters

Rated current	100A
	1000V
Rated pulse voltage	8KV
Pollution level	3
On the basis of UL /CSARated current	600V
Insulation resistance	≥10000MΩ
Contact resistance	≤0.3mΩ
Temperature range	-40℃~+125℃
working life-mating cycles	≥500 time
Strip length	13mm
Rated torque	8N.m(25/35mm²) 9N.m(50mm²) 10N.m(70mm²)
Conductor cross sections (mm²)	16-35mm²
Conductor cross sections(AWG)	6-2AWG

Standards

Connection meets standards	DIN EN 60664 DIN EN 61984
----------------------------	---------------------------

Accessories

Accessories

SW 4 internal hexagonal wrench

/

Business data

Order number	21020000256
Packing unit	100
Minimum order quantity	5
Products weight (without packaging)	80