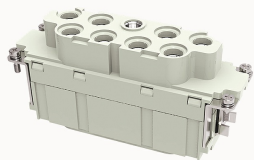


Overview

Product information



DK-8/0-F-21020000060

Heavy-duty insert, Number of contacts: 8/0+PE, Dimension: 24B, Rated voltage : 690V, Rated current: 100A, Female insert, axial Screw connector

Product advantages

- ✓ Axial Screw connection technology, applicable to a wide range of wire specifications;
- ✓ Less materials, easy to manage;
- ✓ With grounding protection.

Product certification



Technical data

Product drawing

3D model

□

Marking

classification	Insert
Series	DK

versions

Connection method	Axial screw connection
Female/Male	Female
Dimension	24B
Number of positions	8/0
PE Contacts	Yes

Material characteristics

Material (insert)	Polycarbonate (PC)
Materia (Contact)	Copper alloy
Surface (Contact)	Silver plated
Flammability rating	V-0
color	Grey/White (RAL 7032)
RoHS	Comply with RoHS exemptions

Electrical parameters

Rated current	100A
	690V
Rated pulse voltage	8KV
Pollution level	3
On the basis of UL /CSARated current	600V
Insulation resistance	≥10000MΩ
Contact resistance	≤0.5mΩ
Temperature range	-40℃~+125℃
working life-mating cycles	≥500 time
Strip length	13mm
Rated torque	6N.m(10mm²) 6N.m(16mm²) 7N.m(25mm²)
Conductor cross sections (mm²)	10-25mm²
Conductor cross sections(AWG)	7-3AWG

Standards

Connection meets standards	DIN EN 60664 DIN EN 61984
----------------------------	---------------------------

Accessories

Accessories

Screwdriver

/

Business data

Order number	21020000060
Packing unit	100
Minimum order quantity	5
Products weight (without packaging)	322.71