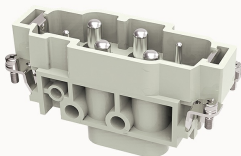


Overview

Product information



DK-4/2-M-21020000063

Heavy-duty insert, Number of contacts: 4/2+PE, Dimension: 16B, Rated voltage : 690/400V, Rated current: 80/16A, Male insert, Screw connector

Product advantages

- ☑ Screw connection technology, applicable to a wide range of wire specifications;
- ☑ No need special tools, easy to operate;
- ☑ Less materials, easy to manage;
- ☑ With grounding protection.

Product certification



Technical data

Product drawing

3D model

□

Marking

classification	Insert
Series	DK

versions

Connection method	Screw connection
Female/Male	Male
Dimension	16B
Number of positions	4/2
PE Contacts	Yes

Material characteristics

Material (insert)	Polycarbonate (PC)
Materia (Contact)	Copper alloy
Surface (Contact)	Silver plated
Flammability rating	V-0
color	Grey/White (RAL 7032)
RoHS	Comply with RoHS exemptions

Electrical parameters

Rated current	80/16A
	690/400V
Rated pulse voltage	8/6KV
Pollution level	3
On the basis of UL /CSARated current	600/300V
Insulation resistance	≥10000MΩ
Contact resistance	≤0.3mΩ
Temperature range	-40℃~+125℃
working life-mating cycles	≥500 time
Strip length	14/7.5mm
Rated torque	1.2N.m(1.5mm²) 2N.m(2.5mm²) 3N.m(4/6/10/16mm²) 0.5N.m
Conductor cross sections (mm²)	1.5-16mm²
Conductor cross sections(AWG)	16-6AWG

Standards

Connection meets standards	DIN EN 60664 DIN EN 61984
----------------------------	---------------------------

Accessories

Accessories

Screwdriver	/
-------------	---

Business data

Order number	21020000063
Packing unit	100
Minimum order quantity	5
Products weight (without packaging)	115