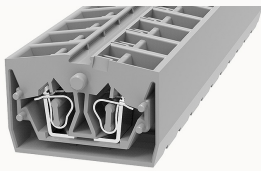


Overview

Product information

**WS2.5T-MID-CO-11030000229**

Spring-cage type Din-Rail TB, connector method: Spring-cage/plug-in connector, Rated voltage: 800 V, Rated current: 24 A, Number of connectors: 4, Number of potentials: 1, Cross section: 0.2 mm² - 2.5 mm², AWG: 28 - 12, Width: 10 mm, Color: gray, Mounting type: Panel installation

Product advantages

- ✓ spring-cage connection technology, good anti-vibration performance;
- ✓ Use an ordinary flat-blade screwdriver, you can easily wire and take the wire;
- ✓ Panel installation, no need to install on the guide rail;
- ✓ Can be matched with marker strips to avoid incorrect insertion of wires.

Product certification



Technical data

Product drawing

3D model



Overview

Connection method	spring-cage connection
Number of rows	1
number of connections	4
Open-end side panels	Yes
Insulation Materials	PA
Flame retardant grade, in line with UL 94	V0
Insulating material group	I

standard test	IEC60947-7-1
---------------	--------------

Dimension

width	10mm
End plate width	4mm
Height	22.00mm
length	32mm

Wiring data

Strip length	8~9mm
Conductor cross section solid AWG	28~14
Conductor cross section solid	0.2~2.5mm ²
Conductor cross section flexible	0.2~2.5mm ²
Conductor cross section flexible (ferrule without plastic sleeve)	0.2-2.5mm ²
Conductor cross section flexible (ferrule with plastic sleeve)	0.2-2.5mm ²
2 flexible conductors with a TWIN ferrule	0.5mm ²

IEC Electrical parameters

Rated voltage (III / 3)	800V
Rated current (III / 3)	24A
Rated surge voltage	8KV

UL Electrical parameters

Rated voltage	600V
Rated current	20A

Environmental conditions

Ambient temperature (operation)	-40 °C ~ 105 °C (depending on derating curve)
Relative humidity (storage/transport)	25%~75%

Ambient temperature (storage / transport)	-25℃~60℃
Mechanical performance test	
Mechanical strength	Passed the test
Fixing support	Passed the test
Rotational Pull Test	Passed the test
Electrical performance test	
Voltage drop	≤3.2mV
Temperature rise test	≤45 K
Safety test	
Anti-finger touch	Passed the test
Environmental protection	
RoHS	No excessive harmful substances
REACH SVHC	Lead 7439-92-1

Accessories	
Marker	
Top marker	ZW5
Side marker	/
Marker support	/
Warning cover	/
Accessories	
Slotted screwdriver size (Blade thickness x Width)	0.5×3.5
Adjacent jumper (2P)	/
Alternate jumper (2P)	/
Staggered jumper (2P)	/

End cover	D-WS2.5-MID-CO
-----------	----------------

Installation

End clamp	E-WS N / E-PC-1100A
Terminal strip marker support	KLM3-20x8 / KLM3-44x8 / DBE-1 / DBE-2
DIN rail	NS35/7.5-1000-00A(H)

Marking & Installation

Marking strip	ZW5
---------------	-----

Accessories

End cover	D-WS2.5-MID-CO
Bridge	WFE-2.5

Business data

Order number	11030000229
Packing unit	100
Minimum order quantity	100
Products weight (without packaging)	6.386