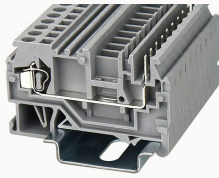


## Overview

## Product information

**WS2.5P-11030000167**

Spring-cage type Din-Rail TB, connector method: Spring-cage/plug-in connector, Rated voltage: 500 V, Rated current: 22 A, Number of connectors: 2, Number of potentials: 1, Cross section: 0.2 mm<sup>2</sup> - 2.5 mm<sup>2</sup>, AWG: 28 - 12, Width: 5 mm, Color: gray, Mounting type: NS 35/7.5, NS 35/15

## Product advantages

- ✓ spring-cage connection technology, good anti-vibration performance;
- ✓ Use an ordinary flat-blade screwdriver, you can easily wire and take the wire;
- ✓ Unique plug-in bridge, high circuit connection efficiency;
- ✓ Can be matched with marker strips to avoid incorrect insertion of wires.

## Product certification



## Technical data

## Product drawing

## 3D model

[□](#)

## Overview

Connection method	spring-cage connection
Number of rows	1
number of connections	1
Open-end side panels	Yes
Insulation Materials	PA
Flame retardant grade, in line with UL 94	V0
Insulating material group	I

standard test	IEC60947-7-1
---------------	--------------

#### Dimension

width	5mm
End plate width	2.5mm
Height	32.45mm
NS 35/7,5 Height	35.45mm
NS 35/15 Height	42.95mm
length	53mm

#### Wiring data

Strip length	8~9mm
Conductor cross section solid AWG	28~14
Conductor cross section solid	0.2~2.5mm <sup>2</sup>
Conductor cross section flexible	0.2~2.5mm <sup>2</sup>
Conductor cross section flexible (ferrule without plastic sleeve)	0.2-2.5mm <sup>2</sup>
Conductor cross section flexible (ferrule with plastic sleeve)	0.2-2.5mm <sup>2</sup>
2 flexible conductors with a TWIN ferrule	0.5mm <sup>2</sup>

#### IEC Electrical parameters

Rated voltage (III / 3)	500V
Rated current (III / 3)	22A
Rated surge voltage	4KV

#### UL Electrical parameters

Rated voltage	300V
Rated current	15A

#### Environmental conditions

Ambient temperature (operation)	-40 °C ~ 105 °C (depending on derating curve)
Relative humidity (storage/transport)	25%~75%
Ambient temperature (storage / transport)	-25°C~60°C

#### Mechanical performance test

Mechanical strength	Passed the test
Fixing support	Passed the test
Rotational Pull Test	Passed the test

#### Electrical performance test

Voltage drop	≤3.2mV
Temperature rise test	≤45 K

#### Safety test

Anti-finger touch	Passed the test
-------------------	-----------------

#### Environmental protection

RoHS	No excessive harmful substances
REACH SVHC	Lead 7439-92-1

### Accessories

#### Marker

Top marker	ZB5 / WB5
Side marker	DEK5
Marker support	DTH5-25×5 / DTH5-25×12
Warning cover	EEA2.5

#### Accessories

Slotted screwdriver size (Blade thickness x Width)	0.5×3.5
Adjacent jumper (2P)	WFA2.5

Alternate jumper (2P)	WFB2.5
Staggered jumper (2P)	WFC2.5-2 WFC2.5-3 WFC2.5-4 WFC2.5-5 WFC2.5-6 WFC2.5-7 WFC2.5-8
End cover	D-WS2.5P

#### Installation

End clamp	E-WS N / E-PC-1100A
Terminal strip marker support	KLM3-20x8 / KLM3-44x8 / DBE-1 / DBE-2
DIN rail	NS35/7.5-1000-00A(H)

#### Marking & Installation

Marking strip	ZB5
Marker cards	DBE-1

#### Accessories

End cover	D-WS2.5P
Bridge	WFA2.5
Plug-in bridge	8EDGK-5.0
End clamp	E-WS
DIN rail	NS35/7.5-1000-00A(H)

#### Business data

Order number	11030000167
Packing unit	100
Minimum order quantity	100
Products weight (without packaging)	5.457