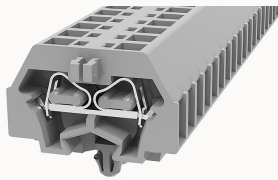


Overview

Product information

**WS1.5-DB-11A(H)-11030000326**

Spring-cage type Din-Rail TB, connector method: Spring-cage/plug-in connector, Rated voltage: 800 V, Rated current: 17.5 A, Number of connectors: 2, Number of potentials: 1, Cross section: 0.2 mm² - 1.5 mm², AWG: 28 - 16, Width: 5 mm, Color: gray, Mounting type: Panel installation

Product advantages

- ✓ spring-cage connection technology, good anti-vibration performance;
- ✓ Use an ordinary flat-blade screwdriver, you can easily wire and take the wire;
- ✓ Panel installation, no need to install on the guide rail.

Product certification



Technical data

Product drawing

3D model

□

Overview

Connection method	spring-cage connection
Number of rows	1
number of connections	2
Open-end side panels	Yes
Insulation Materials	PA
Flame retardant grade, in line with UL 94	V0
Insulating material group	I
standard test	IEC60947-7-1

Dimension	
width	5mm
End plate width	2.5mm
Height	17mm
length	25mm
Wiring data	
Strip length	8~9mm
Conductor cross section solid AWG	28~16
Conductor cross section solid	0.2~1.5mm ²
Conductor cross section flexible	0.2~1.5mm ²
2 flexible conductors with a TWIN ferrule	0.5mm ²
IEC Electrical parameters	
Rated voltage (III / 3)	800V
Rated current (III / 3)	17.5A
Rated surge voltage	8KV
UL Electrical parameters	
Rated voltage	300V
Rated current	10A
Environmental conditions	
Ambient temperature (operation)	-40 °C ~ 105 °C (depending on derating curve)
Relative humidity (storage/transport)	25%~75%
Ambient temperature (storage / transport)	-25°C~60°C
Mechanical performance test	
Mechanical strength	Passed the test
Fixing support	Passed the test

Rotational Pull Test	Passed the test
Electrical performance test	
Voltage drop	≤3.2mV
Temperature rise test	≤45 K
Safety test	
Anti-finger touch	Passed the test
Environmental protection	
RoHS	No excessive harmful substances
REACH SVHC	Lead 7439-92-1

Accessories

Marker

Top marker	/
Side marker	/
Marker support	/
Warning cover	/

Accessories

Slotted screwdriver size (Blade thickness x Width)	0.4×2.5
Adjacent jumper (2P)	/
Alternate jumper (2P)	/
Staggered jumper (2P)	/
End cover	D-WS1.5-DB-12A(H)

Installation

End clamp	E-WS N / E-PC-1100A
Terminal strip marker support	KLM3-20x8 / KLM3-44x8 / DBE-1 / DBE-2

DIN rail	NS35/7.5-1000-00A(H)
Accessories	
End cover	D-WS1.5-DB

Business data	
Order number	11030000326
Packing unit	100
Minimum order quantity	100
Products weight (without packaging)	1.667