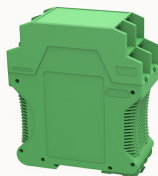


Overview

Product information



FMET-08P-13020000151

DIN rail housings, Complete housing with metal foot catch,tall design, with vents, Width: 45.2mm, Unable to compatible bus connector,color:green,material:PA66,Flammability rating :V0,IP class:IP20.

Product advantages

- ☒ Modular design
- ☒ Multiple connection technologies optional, signal, data,and power transmission can be realized
- ☒ bus connector is optional
- ☒ Various personalized solutions can be achieved according to customer needs

Product certification

Technical data

Product drawing

3D model

□

Dimensions

width	45.2mm
length	99.7mm
Height	114.7mm
Depth from top edge of DIN rail	107.7mm

PCB data

Number of PCB holders	2
PCB thickness	1.8mm
Installation location	Vertical (horizontal DIN rail)
PCBType of installation	Latching

Item properties

IP class	IP20
Connection levels	2(Both sides)
with ventilation openings	Yes
Maximum connection	32 (pitch 5.0mm)

Material data

color	green
Material	PA66
Flammability rating	V0

Environmental data

Ambient temperature (assembly)	-5℃ ~ +105℃
Ambient temperature (operation)	-40℃ ~ +105℃
Ambient temperature (storage / transport)	-40℃ ~ +55℃

Accessories

Accessories

PCB Plug	2EDGKF-5.0-04P-14-00A(H)
PCB Socket	2EDGLF-5.0-04P-14-00A(H)

Business data

Order number	13020000151
Packing unit	9
Minimum order quantity	9
Products weight (without packaging)	119.4

