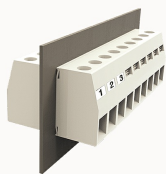


## Overview

### Product information



## DGH50-10090000013

Through-wall terminal blocks, Rated current: 150A. Rated voltage (III/2) : 1000V, Width: 18.8mm, Color: gray, Contact surface : Tin

### Product advantages

- ☑ Screw connection technology, safe and reliable
- ☑ Through-wall installation, free positioning

### Product certification

## Technical data

### Product drawing

### 3D model

□

### Connection capacity

|                                  |                      |
|----------------------------------|----------------------|
| Conductor cross section solid    | 16~50mm <sup>2</sup> |
| Conductor cross section flexible | 16~50mm <sup>2</sup> |
| AWG                              | 6~2/0AWG             |
| Strip length                     | 24mm                 |

### Electrical parameters UL

|                   |      |
|-------------------|------|
| Rated voltage (B) | 600V |
| Rated voltage (C) | 600V |
| Rated voltage (D) | 600V |
| Rated current (B) | 170A |
| Rated current (D) | 5A   |

|                   |      |
|-------------------|------|
| Rated current (C) | 170A |
|-------------------|------|

#### Electrical parameters IEC

|                            |       |
|----------------------------|-------|
| Rated voltage(III/3)       | 690V  |
| Rated current              | 500V  |
|                            | 150A  |
| Rated voltage(III/2)       | 1000V |
| Rated voltage(II/2)        | 1000V |
| Rated surge voltage(III/3) | 8KV   |
| Rated surge voltage(III/2) | 8KV   |
| Rated surge voltage(II/2)  | 8KV   |

#### Item properties

|                      |                     |
|----------------------|---------------------|
| Type of installation | panel               |
| Connection method    | Screw connection    |
| Screwdriver          | Slotted screwdriver |
| screw thread         | M6                  |
| Pitch                | 18.8mm              |
| Number of potentials | 1                   |
| Pluggable or not     | Yes                 |
| Number of rows       | 1                   |

#### Material data

|                             |                           |
|-----------------------------|---------------------------|
| Environmental items         | Compliant with REACH/RoHS |
| Contact material            | copper                    |
| Contact point metal surface | tin-plated                |
| Contact zone metal surface  | tin-plated                |
| Insulation Materials        | PA66                      |

|                                 |  |
|---------------------------------|--|
| Insulating material group       | I  |
| Flammability rating             | UL94V-0                                  |
| Mechanical tests                |  |
| Test Specification              | IEC60947/UL1059                          |
| Environmental data              |  |
| Ambient temperature (operation) | -40°C~105°C(depending on derating curve) |

Accessories

| Accessories    |   |
|----------------|---|
| Coding strip   | / |
| Bridge         | / |
| Marking strip  | / |
| Others         | / |
| Tool           |   |
| Operating tool | / |
| Screwdriver    | / |

|                                     |             |
|-------------------------------------|-------------|
| Business data                       |             |
| Order number                        | 10090000013 |
| Packing unit                        | 20          |
| Minimum order quantity              | 30          |
| Products weight (without packaging) | 120         |