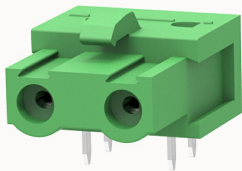


Overview

Product information



2EDGA-7.62-10020000518

Pluggable terminal blocks, Rated current: 20A. Rated voltage (III/2) : 400V, pitch: 7.62mm, Color: green, Contact surface : Tin

Product advantages

- ☒ PCB welding, plug direction is parallel to the PCB
- ☒ Multiple contacts to provide touch protection for connection

Product certification



Technical data

Product drawing

3D model

□

Dimension

lettering field size

11X10.8mm

Processing notes

Process

Wave soldering/manual soldering

Electrical parameters UL

Rated voltage (B)

300V

Rated voltage (D)

300V

Rated current (B)

15A

Rated current (D)

10A

Electrical parameters IEC

Rated voltage	630V
Rated voltage(III/3)	500V
Rated current	20A
Rated voltage(III/2)	630V
Rated voltage(II/2)	1000V
Rated surge voltage(III/3)	6KV
Rated surge voltage(III/2)	6KV
Rated surge voltage(II/2)	6KV

Item properties

Connection direction	0°
Type of installation	PCB welding
Pin arrangement	Double-row in a straight line
Pitch	7.62mm
Number of potentials	2
Pluggable or not	Yes
Number of rows	1

Material data

Environmental items	Compliant with REACH/RoHS
Contact material	Copper alloy
Contact zone metal surface	tin-plated
Insulation Materials	PA66
Insulating material group	I
Flammability rating	UL94V-0

Environmental data

Ambient temperature (operation)	-40℃~105℃(depending on derating curve)
---------------------------------	--

Accessories

Accessories

Coding strip	/
Bridge	/
Marking strip	/
Others	/

Tool

Operating tool	/
Screwdriver	/

Business data

Order number	10020000518
Packing unit	1020
Minimum order quantity	30
Products weight (without packaging)	1.884